

COMMUNITY WORKSHOP
**ROCKWELL AND JOHNSON
ELEMENTARY SCHOOL PROJECTS**



Perkins Eastman

APRIL 5, 2017



OVERVIEW AND AGENDA

Introduction and Overview

Dr. Christine Carver

Perkins Eastman Architects Introduction

Joseph Costa, AIA

21st Learning

Mike Berger

Findings from Teacher Workshops

Tina Greco, AIA

Community Workshop Sessions

Small Groups

Share Findings and Next Steps

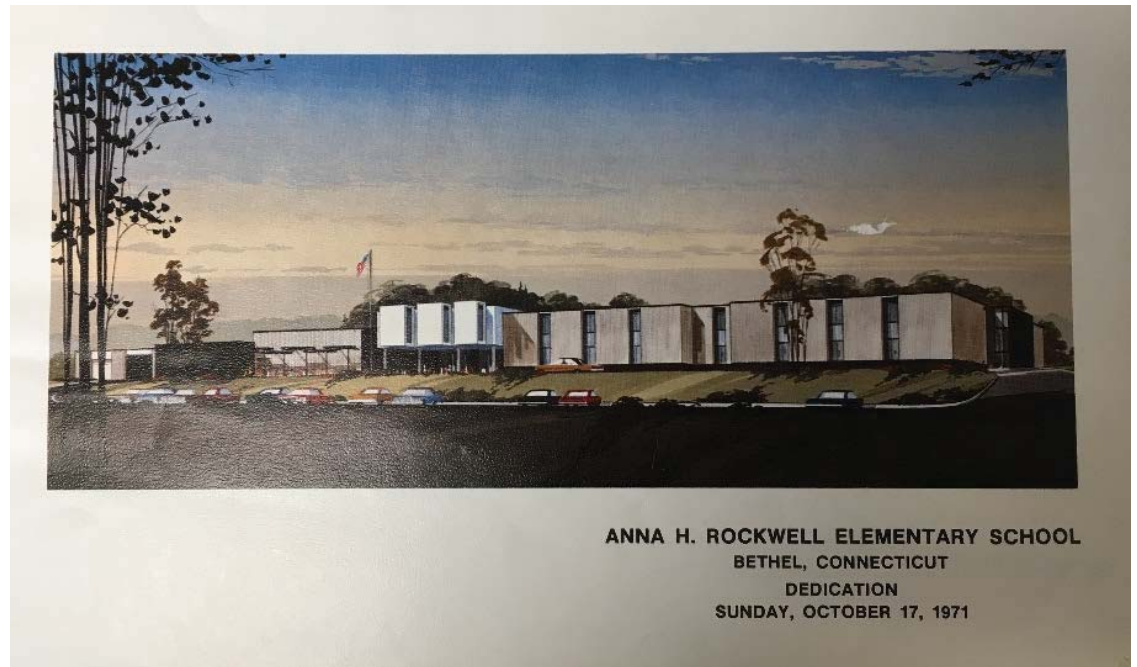
Dr. Christine Carver will lead

INTRODUCTION & OVERVIEW

Perkins Eastman

The Nature and Context of the Problem

- Age of Structure
 - Rockwell - 1971
 - Johnson - 1980
- Americans with Disabilities Act Compliance
- Space restrictions at Rockwell School/Enrollment
- Code Compliance
- Hazardous Materials
- Electrical & Utility Systems at Capacity
- Failing Roof Systems
- Failing Climate Control (Heat & AC)
- Safety & Security Concerns



The Most Significant Problem...

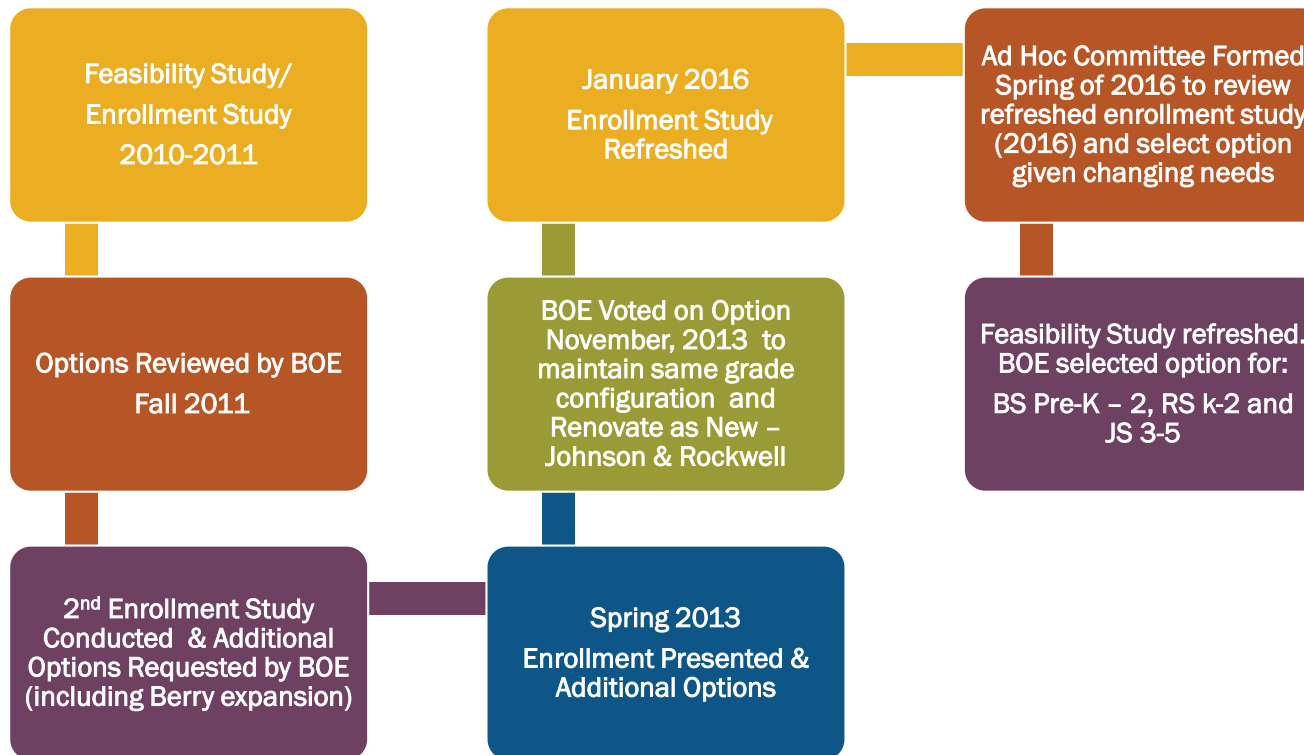
Cannot meet the instructional needs of the 21st Century Learner

- Electrical & infrastructure does not meet technological needs
- Spaces and furniture cannot be adapted to promote 21st Century Skills without significant expense
- Intervention/support space is completely inadequate

The State Dilemma Why we want to stay on the timeline for filing on June 30th?

- Budget Deficit
- School Construction Projects Increase State Bonding Debt
- More Careful Review of Projects
- Potential for Changes in Guidelines from Department of Administrative Services (DAS), Office of School Construction
 - Reimbursement Rates
 - Eligible and Ineligible Expenses

What has happened...



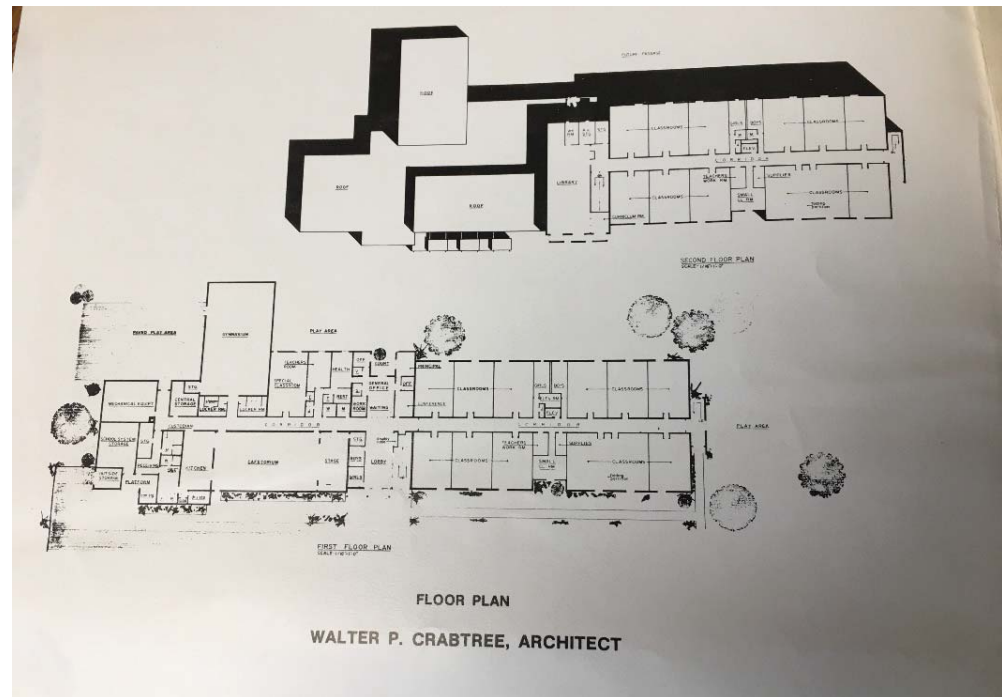
Approximately **4%** Per Year
COST ESCALATION

School Construction Grants

Renovate – only new items and code compliance work are eligible for state reimbursement at 47%

Renovate as New – 47%

Build as New – 30%



What Options did the Ad Hoc Committee Review and Reject

1. *Build-as-New*
2. Do nothing
3. Three K-5 Schools with Rockwell & Johnson as *Renovate-As-New*
4. Closing Rockwell. Additions to Johnson & Rockwell. *Renovate-As-New* Rockwell & Johnson schools
5. All three elementary schools remain the same enrollment and grade configuration. *Renovate-As-New* Rockwell & Johnson schools
6. Berry grades Pre-K-3, Rockwell K-2 (3rd grade students to Johnson), Johnson 3-5. *Renovate-As-New* Rockwell & Johnson schools
7. Berry and Rockwell K-3 Schools and moving Pre-K to Johnson. *Renovate-As-New* Rockwell & Johnson schools
8. Berry Pre-K – 3, making Rockwell K-3 but a smaller school (shifting some enrollment to Berry) and Johnson would remain a 4-5 school. *Renovate-As-New* Rockwell & Johnson schools

Final Choice

Berry Pre-K – 2, Rockwell K-2 and Johnson 3-5; Rockwell & Johnson
a Renovate-As-New

Primary Reasons:

1. Two years in Johnson School does not develop a sense of school community.
2. All grade levels in the same building enables a consolidation of resources to support instructional programs.
3. No increase to the amount of student transitions.
4. Adding an addition provides more cost effective options for "swing space" during the renovation project.
5. Provides the most opportunity for growth potential.

FIRM INTRODUCTION

Perkins Eastman



Charter Oak International Academy



CREC International Magnet School

FIRM OVERVIEW

- Founded in 1981
- Large full-service architecture firm
- Dedicated Education Practice Group—Thought Leadership
- Design Excellence – 200+ Awards
- Innovative Design
- Client Partnerships - Fairfield
- CT DAS/OSG&R

BREADTH OF EXPERTISE



BRIGHTWOOD ELEMENTARY



CONCORDIA ELEMENTARY



SEATON ELEMENTARY



CHENGDU INT'L SCHOOL



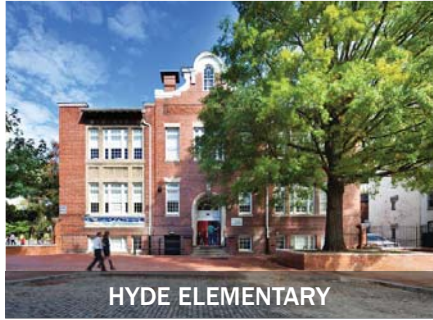
GLENVILLE ELEMENTARY



STENWOOD ELEMENTARY



FALK LAB SCHOOL



HYDE ELEMENTARY



STODDERT ELEMENTARY



AVENUES: THE WORLD SCHOOL



NEWELL ELEMENTARY



WINDSOR PARK ELEMENTARY

LOCAL EXPERTISE





CHARGE

- Assist with Option selection
- Develop Ed Spec – Program needs
- Develop concept design
- Prepare estimates and schedule
- Assist with State grant application
- Help with Referendum Process





21st century education

THE CLASSROOM BECOMES A LEARNING STUDIO



THE CLASSROOM BECOMES A LEARNING STUDIO



LEARNING SPACES



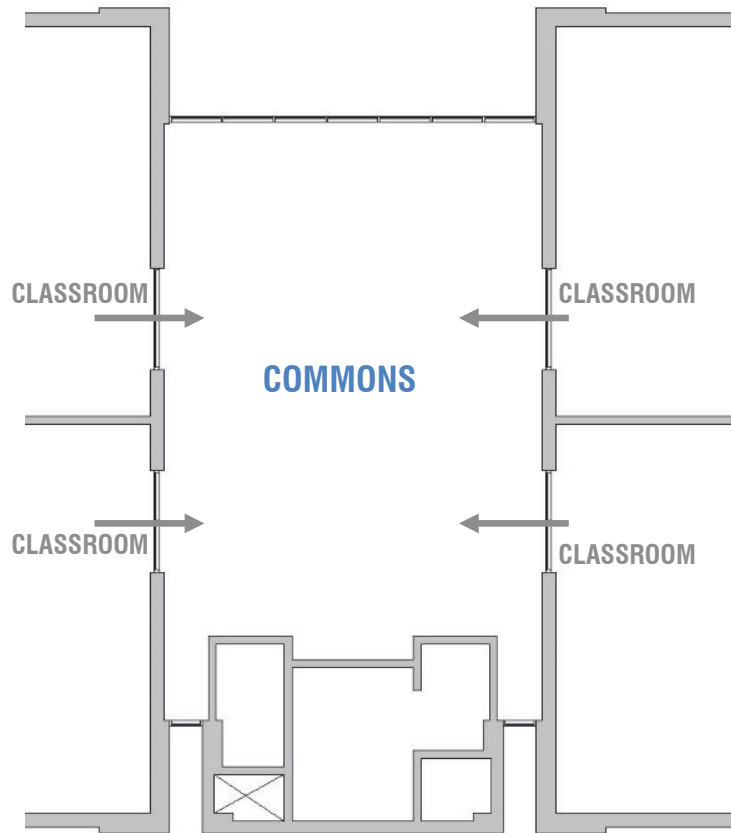
THE CORRIDOR BECOMES AN EXTENSION TO THE LEARNING STUDIO



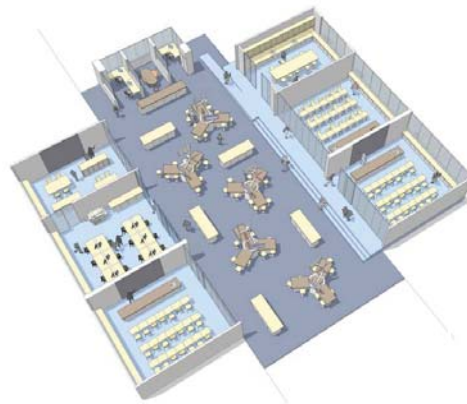
...AND A PLACE FOR INFORMAL INTERACTION



COMMON SPACE ALLOWS FOR TEAMING



STEM IS ABOUT CONNECTING SPACES AND PROMOTING INQUIRY



PROJECT BASED LEARNING REQUIRES A MAKER SPACE



THE MEDIA CENTER BECOMES A LEARNING COMMONS



THE MEDIA CENTER BECOMES A LEARNING COMMONS



THE MEDIA CENTER BECOMES A LEARNING COMMONS



ACTIVE SPACES ARE FOR LEARNING



THE AUDITORIUM IS A TEACHING SPACE



THE AUDITORIUM IS A TEACHING SPACE



...AND MUSIC ROOMS ARE PERFORMANCE SPACES



CAFETERIAS ARE ALL DAY LEARNING SPACES



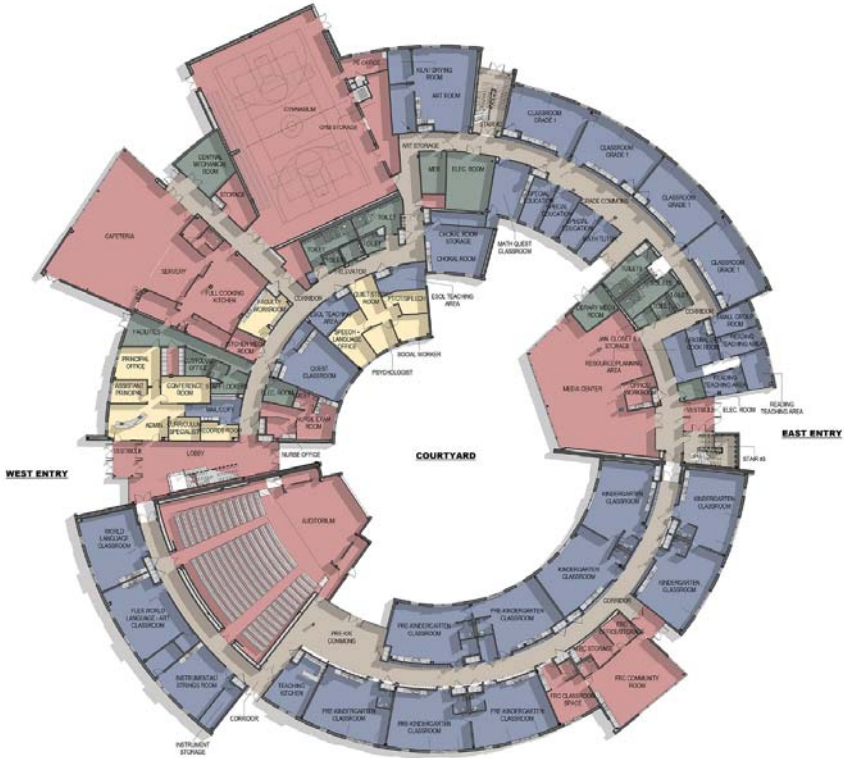
SPACES SHOULD CONNECT TO THE OUTDOORS



...AND LEARNING SHOULD EXTEND INTO THE LANDSCAPE



...AND THE BUILDING SHOULD BE A TEACHING TOOL



TEACHERS NEED SPACE TOO



PROGRAM WORKSHOPS

Perkins Eastman

RECURRING THEMES

Perkins Eastman

RECURRING THEMES

- 1 Natural Light and Views
- 2 Accessibility
- 3 Acoustics
- 4 Storage
- 5 Flexibility for Different Kinds of Learning
- 6 Infrastructure upgrades:
 - Electrical
 - Technology
 - Ventilation and AC



NATURAL LIGHT AND VIEW



ACCESSIBILITY



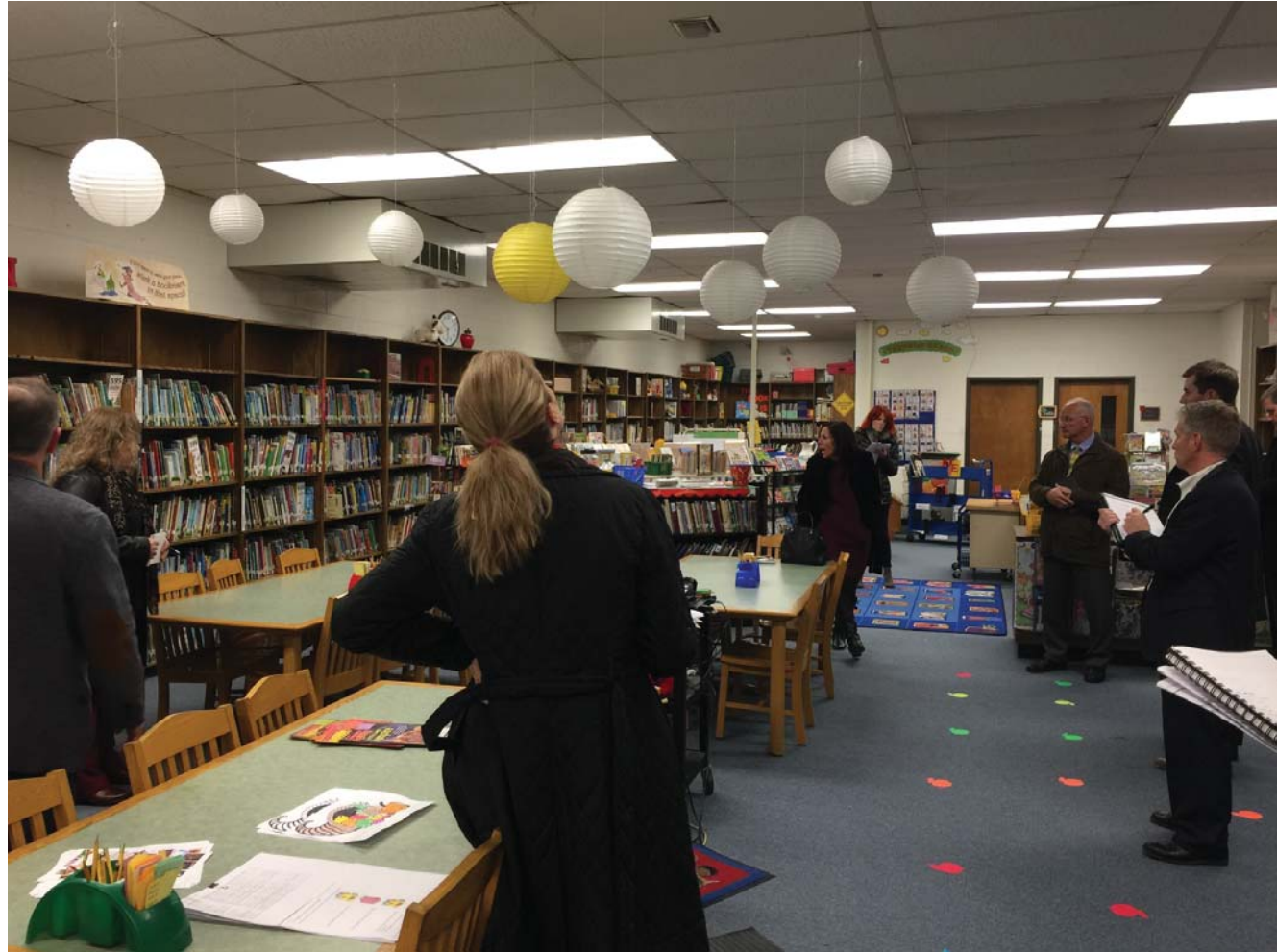
ACOUSTICS



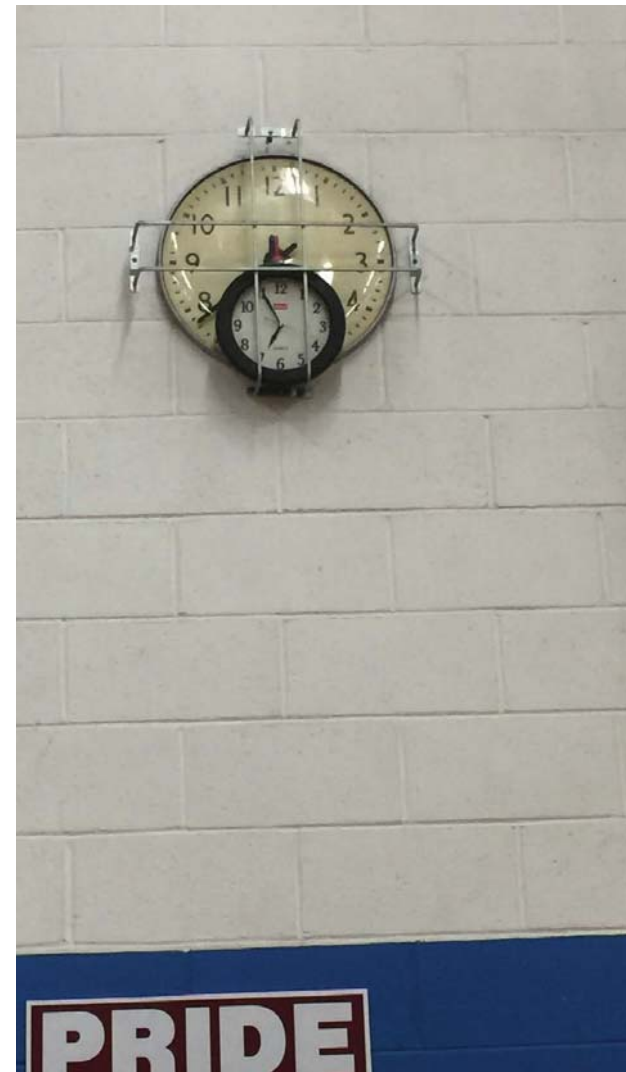
STORAGE



FLEXIBILITY FOR DIFFERENT KINDS OF LEARNING



INFRASTRUCTURE UPGRADES



- 1** Integrated Learning
- 2** STEAM - Discipline Connections Facilitated
- 3** Commons
- 4** Security
- 5** Teacher Workspaces
- 6** Site Traffic Flow & Parking
- 7** Accessible Playgrounds
- 8** Outdoor Learning

SPECIFICS



INTEGRATED LEARNING



STEAM - DISCIPLINE CONNECTIONS FACILITATED



COMMONS



TEACHER WORKSPACES



SITE TRAFFIC FLOW & PARKING



ACCESSIBLE PLAYGROUNDS



OUTDOOR LEARNING





COMMUNITY INPUT

Perkins Eastman



THREE QUESTIONS

- 1 What is important to you about Bethel Schools?**
- 2 What should Rockwell and Johnson look and feel like?**
- 3 How can the schools support Community use?**



SHARE FINDINGS

Perkins Eastman



NEXT STEPS

Perkins Eastman

THANK YOU

Perkins Eastman